

TECHNICAL SPECIFICATIONS

Channel	2 input / 1 transmitter
Converter type	2 channels 12bit A/D converter
Input type	Differential / Single ended / IEPE
Input range	+/- 5 Vpp
Amplifier range	1 to 40000 software selectable
Pretrigger	Selectable 0 - 2000 samples 1CH; 0 - 1000 samples 2CH
Sample rate	10KHz to 12.5 MHz (12.5MHz/1Ch - 6.25MHz/2Ch)
Sample per event	up to 8K samples for each channel
Travel time resolution	80 ns
Sample resolution	12 bit@12.5MHz to >16bit@ 50Khz (with oversampling)
Bandwidth	1 MHz typ @ gain 10
Filter	antialias, digital filter selectable (DSP)
Trigger type	hardware, software, threshold (selectable)
Voltage out Trasmitter	Selectable, 100V to 1200V
Pulse duration	Selectable, 1 to 65000uS
Transmitter pulse repetition	> 20 misure/secondo
I/O:	WiFi 802.11 (100m)
Transducers	Piezoelectric-Type: - Hole-Probe: transmitter / receiver. Diameter 26mm; Length 150 mm - Receiver Sensor (wall-type): 55KHz - Transmitter Sensor (wall-type): 55 KHz - Transmitter Sensor (wall-Type): 20 KHz - Hammer with accelerometer - Accelerometer Dytran
Power supply	Internal battery LiFePO4 (4,5Ah)
Consuming	1,8W StandBy/ 2.8W Ultrasonic active
Autonomy	35 hour standBy/ 20 hour working
Case	IP 65
Working temperature	0-60°C
Size and weight	LxWxH 320x212x96mm, weight 2,5 kg



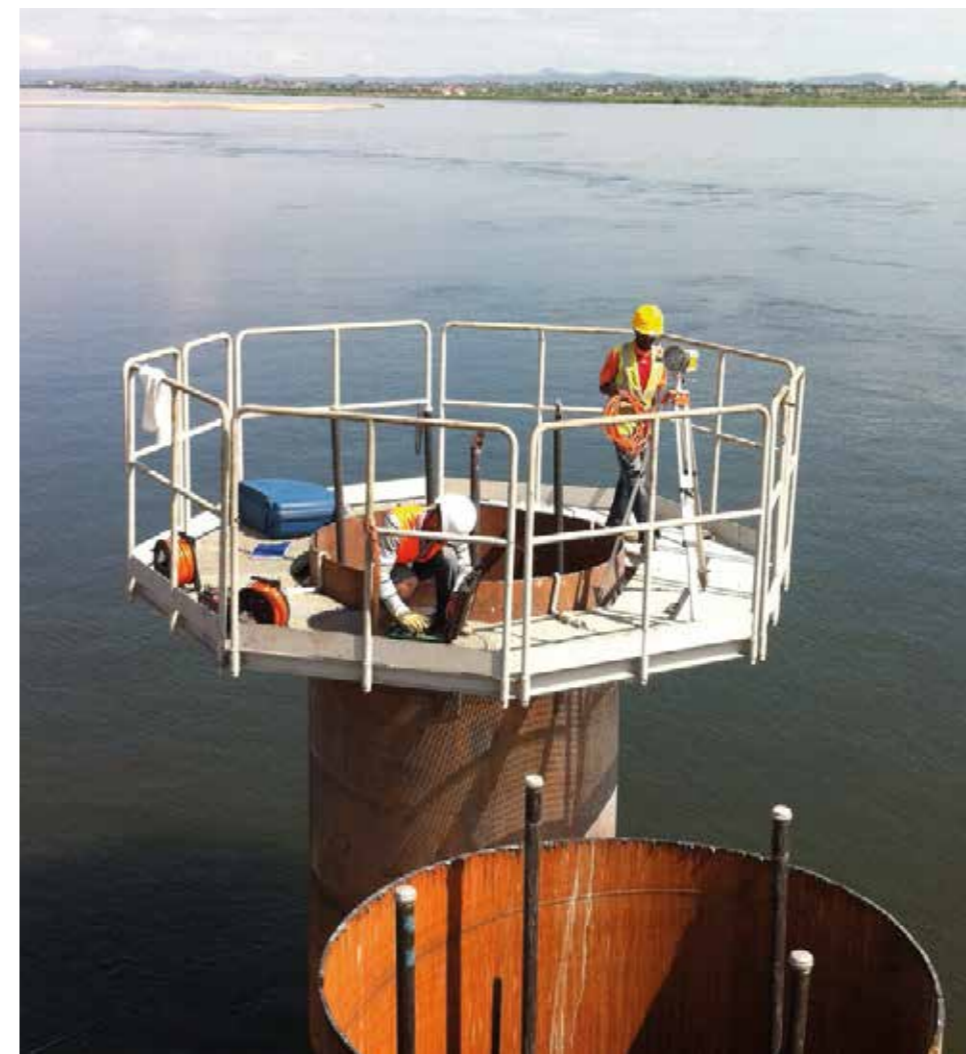
SOLGEO S.r.l.: Via Pastrengo 9, 24068 Seriate (BG)
 Tel. +39 035 4520075
 Web site: www.solgeo.eu e-mail: info@solgeo.it

Via Rho 56, 20020 Lainate (MI)
 Tel. +39 02 93799240
 Web site: www.boviar.com e-mail: info@boviar.com



All-in One SYSTEM

- + KIT CONTACT
- + KIT MCHA
- + KIT P.I.T.



PRODUCT PLUS

- 3 probes system
- Drastic reduction of acquisition time survey
- Smart probes including signal generation and active pre-amplification
- Distance between pipes up to 3m
- Acquisition unit with high dynamic range and low electronic noise
- Ultrasonic contact probes (55-20KHZ) triggered hammer, dedicated software
- Rugged and reliable equipment
- Pulse echo & low strain method, elaboration software included
- Fully respects main international standard guidelines

All-in One

All-in One system is a rugged and reliable equipment with various dedicated piezoelectric sensors and probes.

All-in One is characterized by an A/D board multichannel and selectable sampling rates from 10KHz to 6.25MHz (up to 12.5MHz single channel).

All acquired signals are displayed, computed and memorized directly on tablet pre-installed MCH-sonic software. Connection between All-in One system and tablet via WiFi.



KIT CONTACT

- + In respect of the Standard: UNI EN 12504-4, ASTM D2845-08 and ASTM C597-02.
- + Sonic and ultrasonic measurements frequency 55 kHz or 20 kHz highly sensitive active piezoelectric receivers.
- + Even for wood samples.
- + Integrated with a HAMMER-Transducer.



KIT MCHA

Ultrasonic Cross-Hole Testing

- + According to the Norm: ASTM D6760-16.
- + Simultaneously cross-hole measurements along three paths in pile foundation.
- + Synchronization impulse using an encoder.
- + Result can promptly be printed.
- + High power transmitter and high sensitive active-type piezoelectric receivers (50 and 80 kHz).



80 KHz

KIT P.I.T.

Pile Integrity Testing

- + According with Norm: ASTM D5882-07.
- + PIT-Hammer and Accelerometer,
- + Low Strain Integrity and Echo methods.
- + Solgeo software "PPS" included.



50 KHz